



INTEQ

Company : Santos
Well : Henry 2
Interval : 657.00 - 2042.00 meters
Created : 14/Sep/2008 2:05:14 PM



HENRY-2 GAS RATIO PLOT

TOTAL GAS
DITCH GAS

1 | 10 | 100 | 1000
unit

CHROMATOGRAPH ANALYSIS

Methane
Ethane
Propane
iso-Butane
iso-Pentane
n-Butane
n-Pentane
ppm

10 | 100000

OCQ
OCQ Backup

5 | 6 | 7 | 8
OCQ

RATIOS
GWR

10 | 100 | 1000
LHR

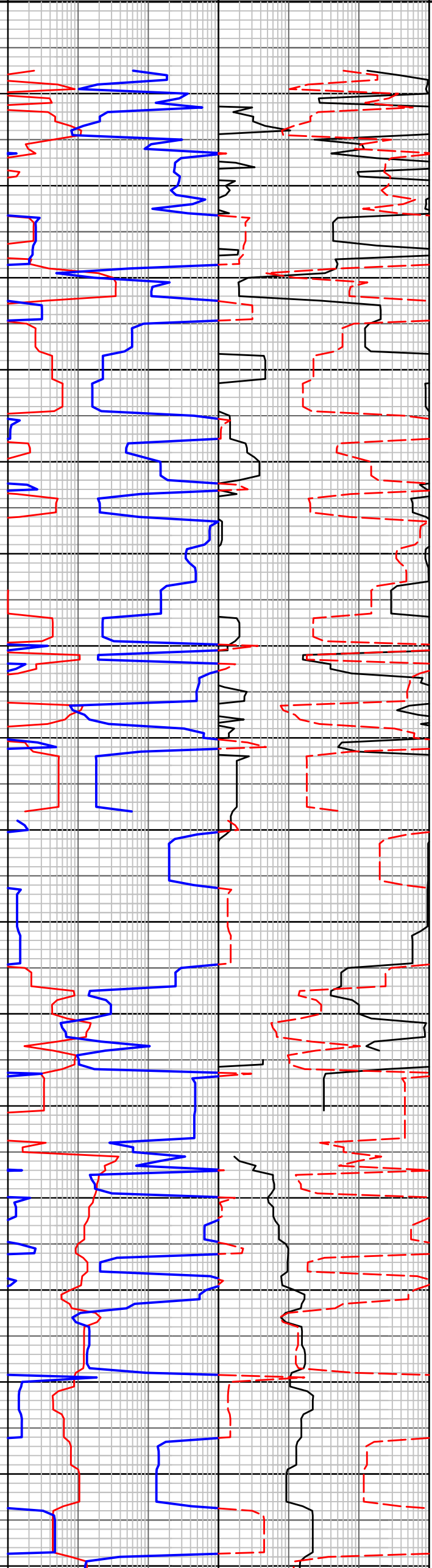
C1/(C2+C3+C4)
C1/C2

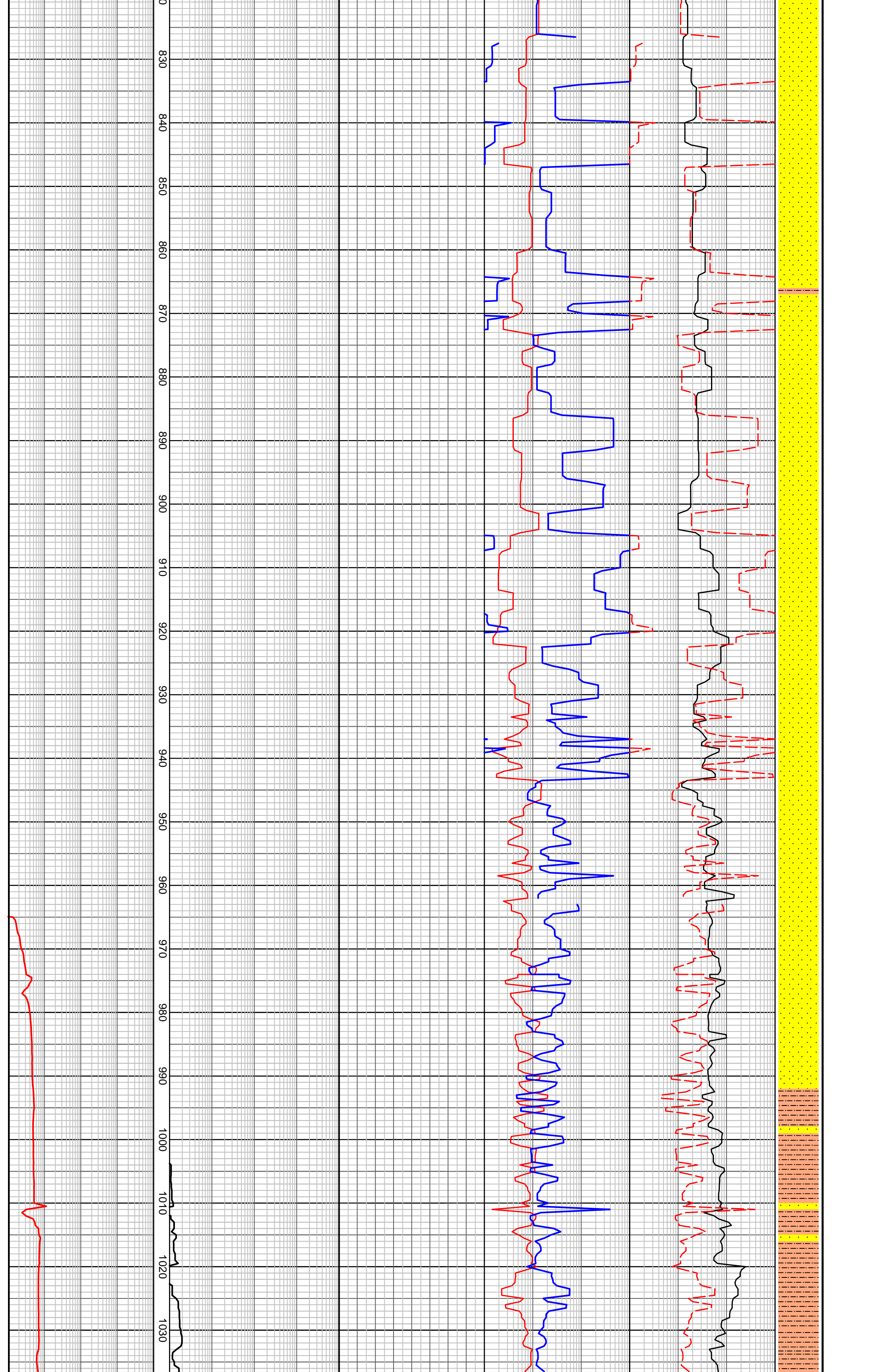
C1/C3
C1/C4
C1/C5
10 | 100 | 1000

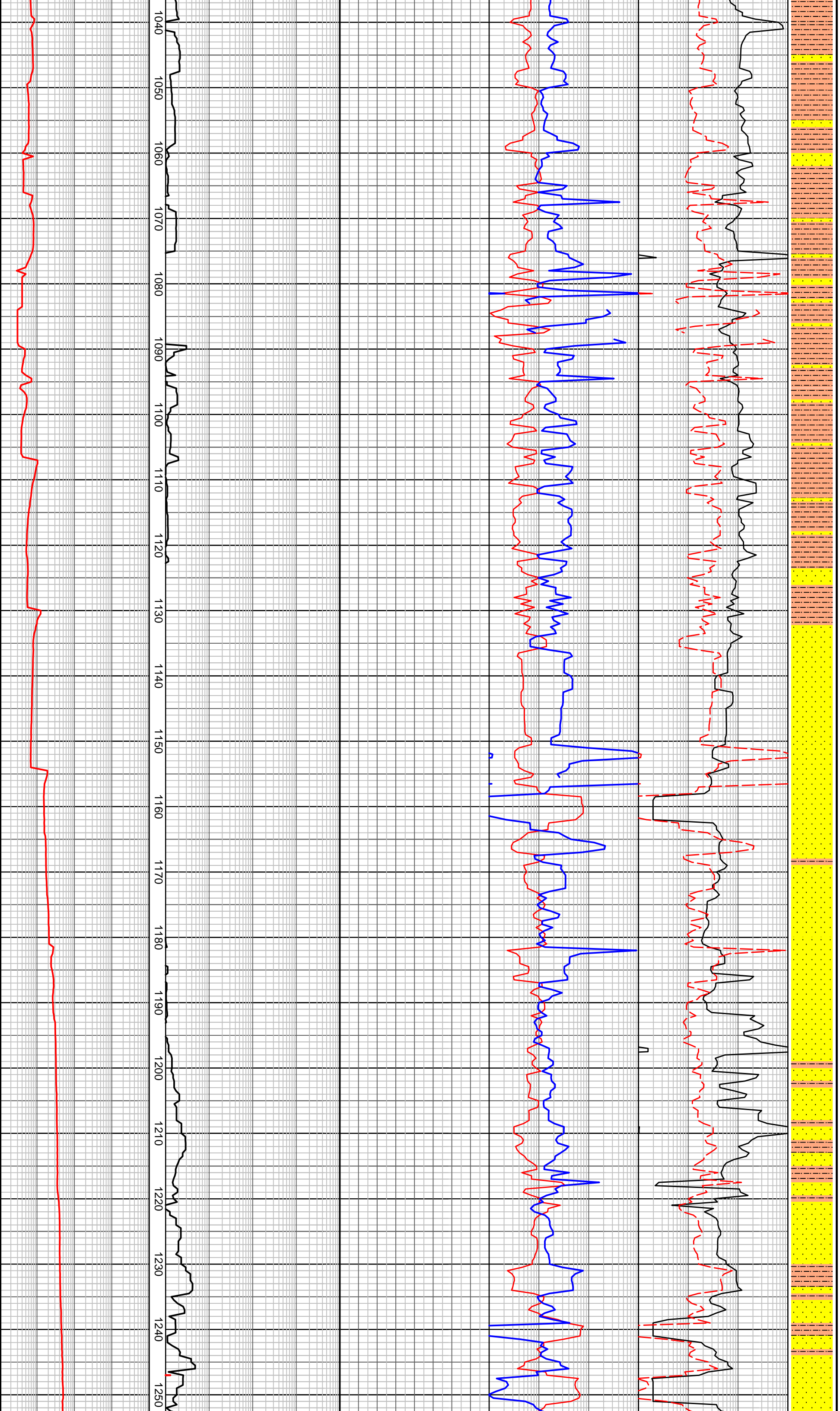
MD meters 1:500

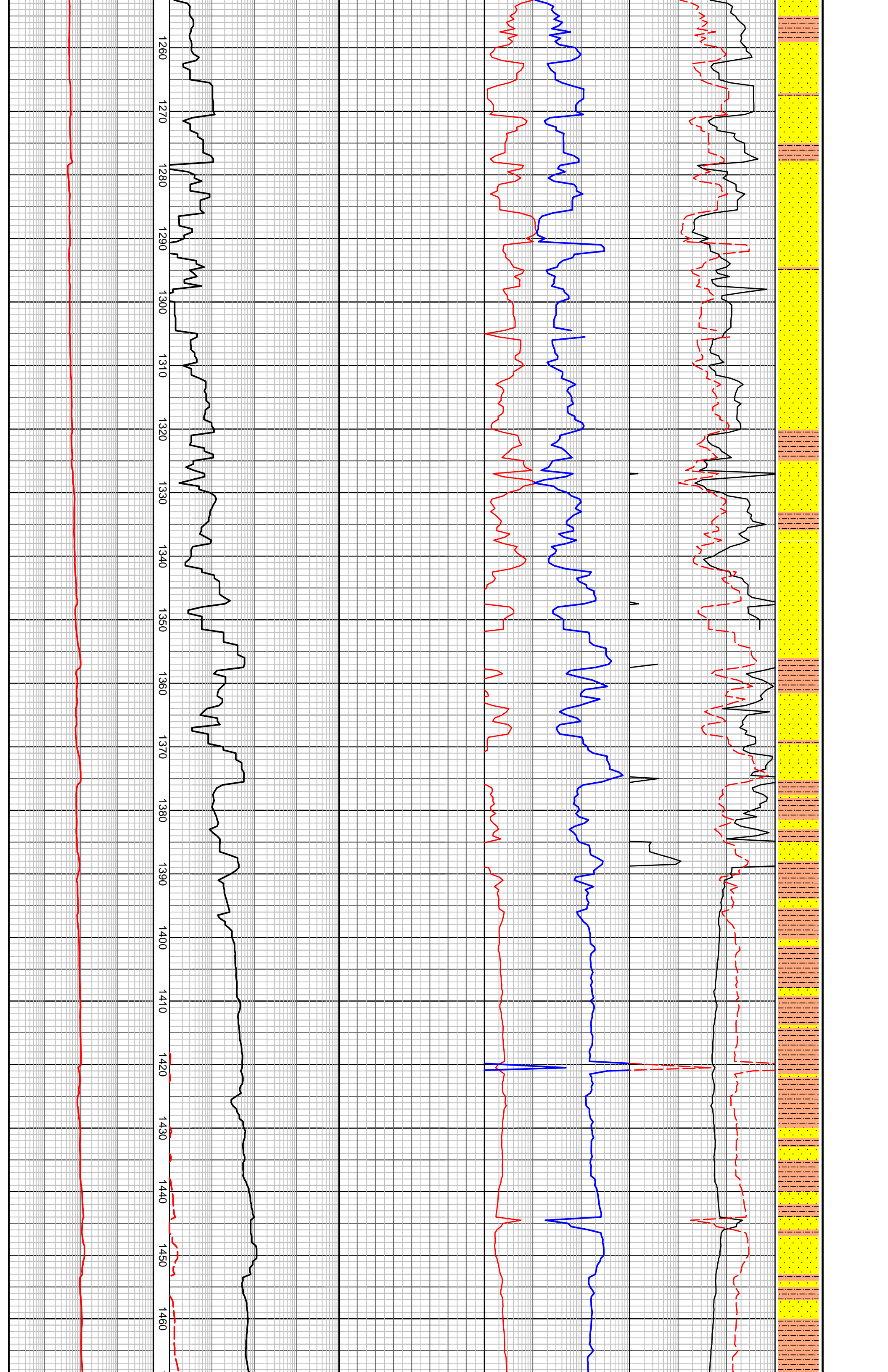
650
660
670
680
690
700
710
720
730
740
750
760
770
780
790
800
810
820

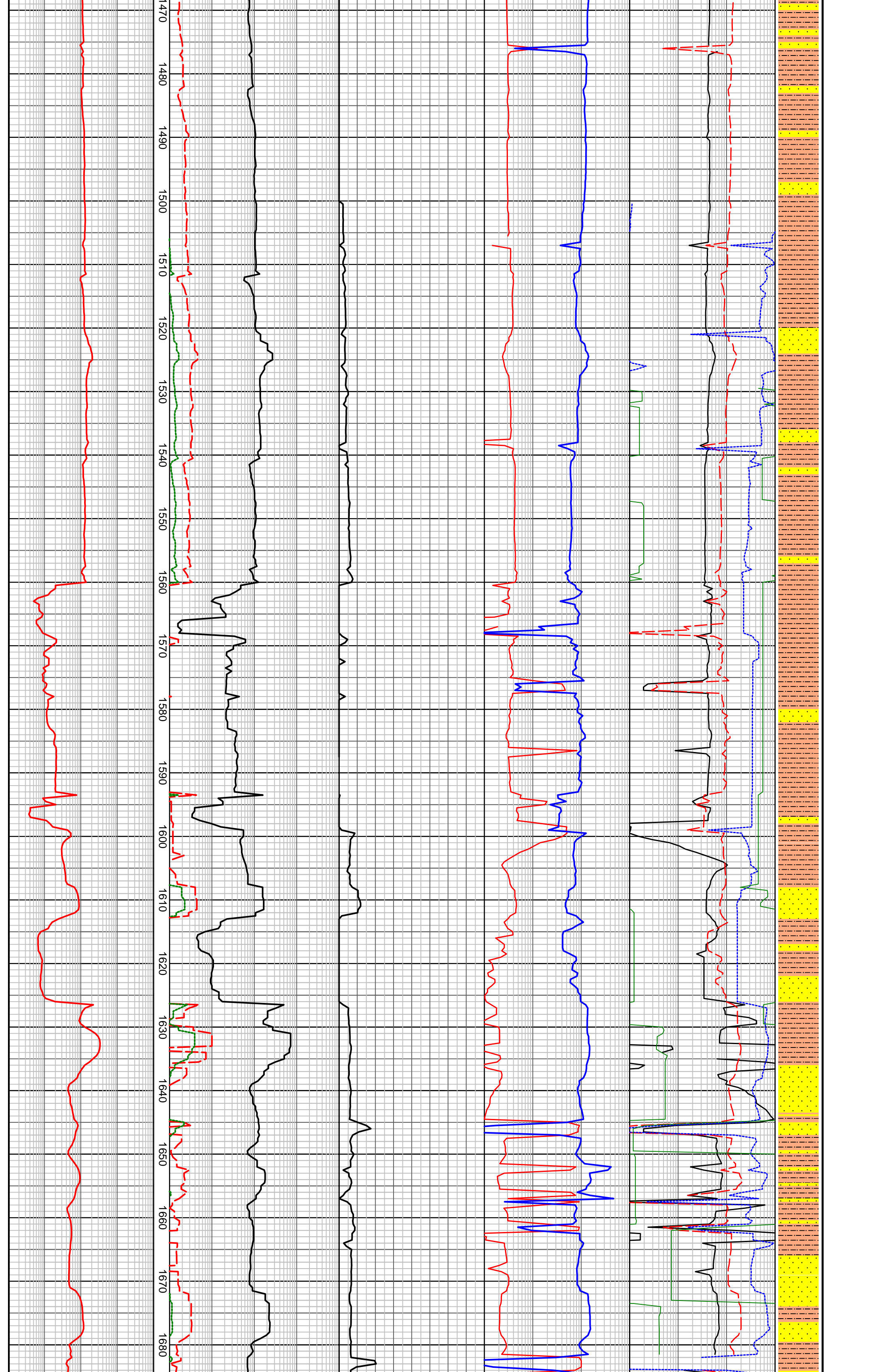
Returns to Seafloor above 657.00m

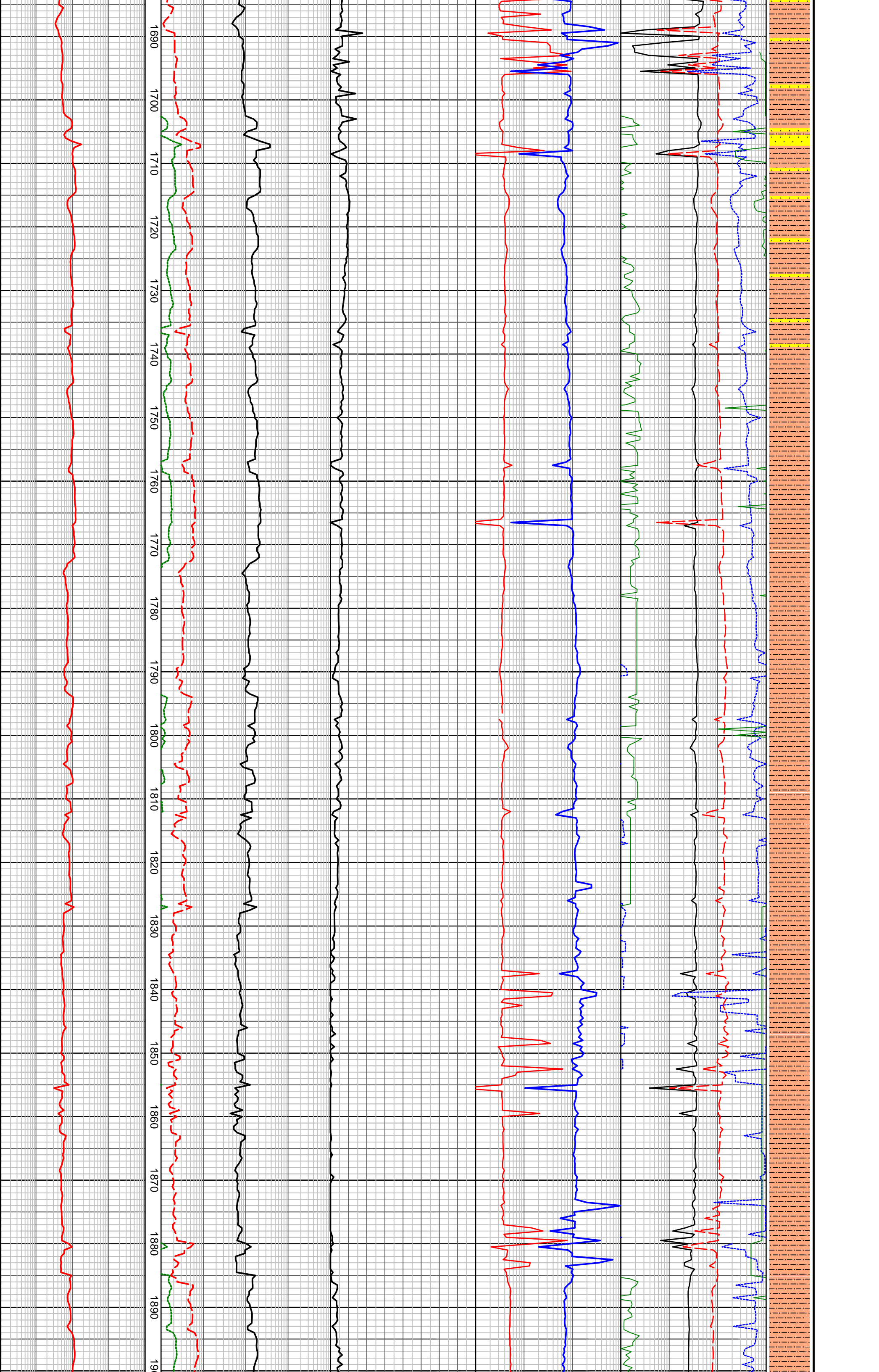


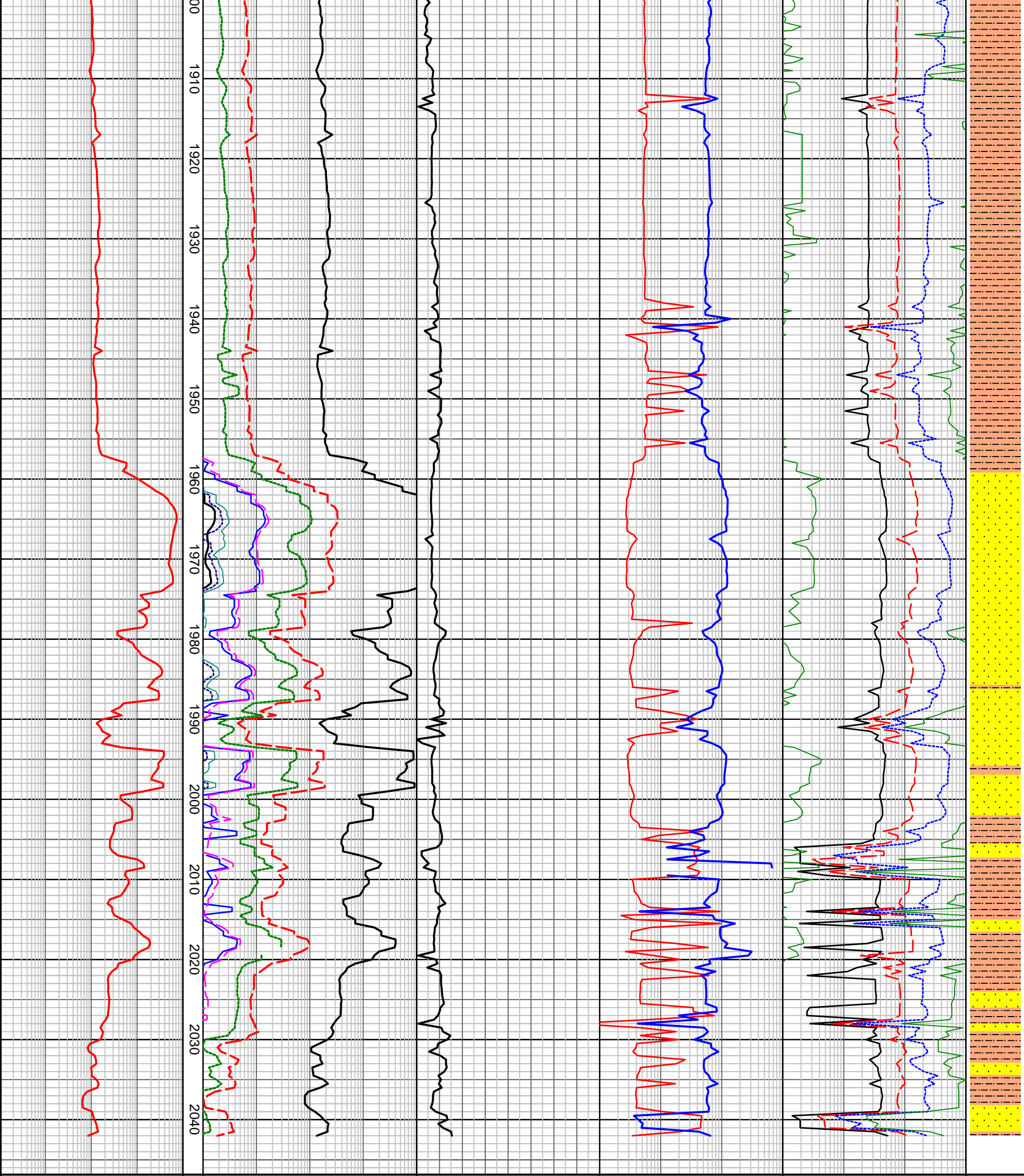












HENRY 2 GAS RATIO PLOT

TOTAL GAS DITCH GAS		CHROMATOGRAPH ANALYSIS	OCQ				RATIOS			C1/(C2+C3+C4)		
1 10 100 1000 unit			OCQ Backup				GWR			C1/C2		
		Methane	5	6	7	8	10	100	1000	C1/C3		
		Ethane	OCQ				LHR			C1/C4		
		Propane	1	2	3	4	10	100	1000	C1/C5		
		iso-Butane								10	100	1000
		iso-Pentane										
		n-Butane										
		n-Pentane										
		ppm										